

INSTALLATION and OPERATION MANUAL



CFFWA-XX-1-U





INSTALLATION & OPERATING MANUAL

CFFWA Universal Mount Fan Coils
12,000-60,000 BTUH

----- CAUTION -----

Care must be taken when handling sheet metal. Sheet metal parts have sharp edges and could cause injury.

GENERAL

Read the entire contents of this manual before beginning installation. MultiAqua assumes no responsibility for equipment installed contradictory to any code requirement or installation instructions.

The components of this fan coil have been inspected at the factory and readied for shipment. Upon receiving the shipment a visual inspection of the packaging must be performed.

If any damage to the packaging is discovered, an inspection of the components must be performed and noted on the delivery documents. If component damage is found a damage claim must be filed by the receiving party against the delivery party immediately.

This product is designed and manufactured to permit installation in accordance with national codes. It is the installer's responsibility to install the product in accordance with national codes and/or prevailing local codes and regulations.

Care must be taken to ensure the structural integrity of the supporting members, clearances and provisions for servicing, power supply, coil connections and/or condensate removal. Before the installation ensure the structural strength of the supporting members is sufficient. See **Figure 1** for hanging weights of the fan coils.

This unit is designed to be installed in a

horizontal or vertical configuration. Fan coil can be mounted on a wall or ceiling. See figure 2 for fan coil and mounting bracket dimensions.

FAN COIL MODEL NUMBER	APPROXIMATED WEIGHTS (lbs.)
CFFWA-04-1-U	79.37
CFFWA-06-1-U	83.77
CFFWA-08-1-U	88.18
CFFWA-12-1-U	116.84
CFFWA-16-1-U	158.73
CFFWA-20-1-U	163.14

Figure 1



INSTALLATION & OPERATING MANUAL

CFFWA Universal Mount Fan Coil
12,000-60,000 BTUH

CFFWA Mounting Bracket Dimensions (in)		
Model Number	A	B
CFFWA-04-1-U	36.49	13.00
CFFWA-06-1-U	36.49	13.00
CFFWA-08-1-U	36.49	13.00
CFFWA-12-1-U	48.30	13.00
CFFWA-16-1-U	71.97	13.00
CFFWA-20-1-U	71.97	13.00

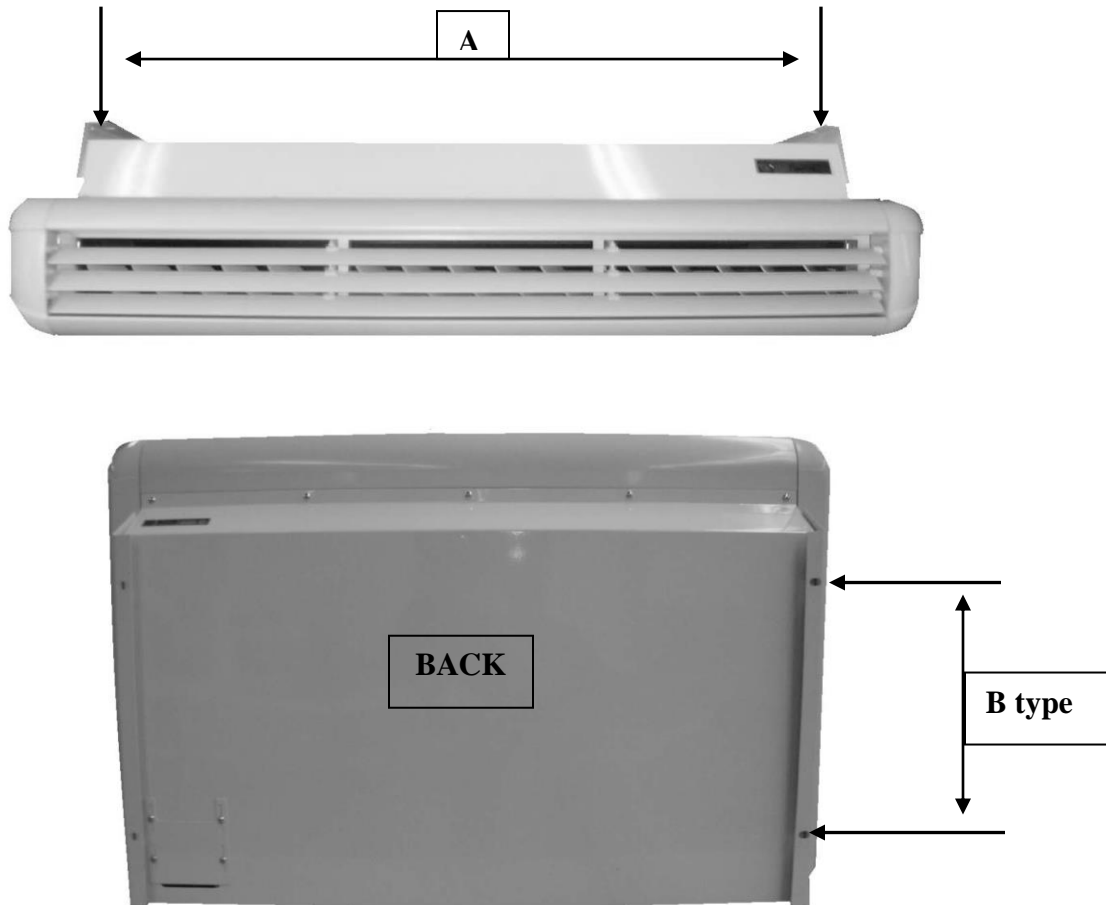


Figure 2

*These specifications are subject to change without notice.
Check www.multiaqua.com for the latest information.*



INSTALLATION & OPERATING MANUAL

CFFWA Universal Mount Fan Coil
12,000-60,000 BTUH

----- **CAUTION** -----

Care must be taken when handling sheet metal. Sheet metal parts have sharp edges and could cause injury.

INSTRUCTIONS FOR INSTALLING THE MOUNTING BRACKETS AND UNIT

1. The unit should be installed for horizontal or vertical discharge applications only.
2. Select position for unit and define direction of water pipe, drain and electrical wiring. Access to water supply and return lines can be obtained from the right hand side bottom and right side rear **Figure 4 & 5**. See next page for access dimensions.

Figure 3, 4 and 5

3. Remove mounting brackets from both sides of unit.

Figure 6 (Page 6)

4. Prepare mounting bolts for mounting unit under ceiling or on a wall at the distances provided in **Figure 2** (Page 3).
5. Select a location that permits even air flow throughout the room.
6. Select a location that has enough service space when the unit is mounted under the ceiling or on the wall.

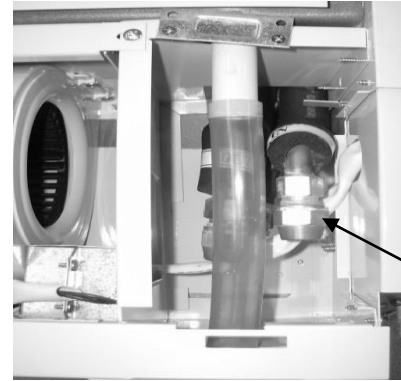


Figure 3



Figure 4

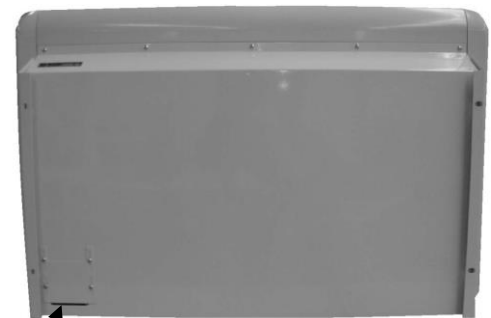


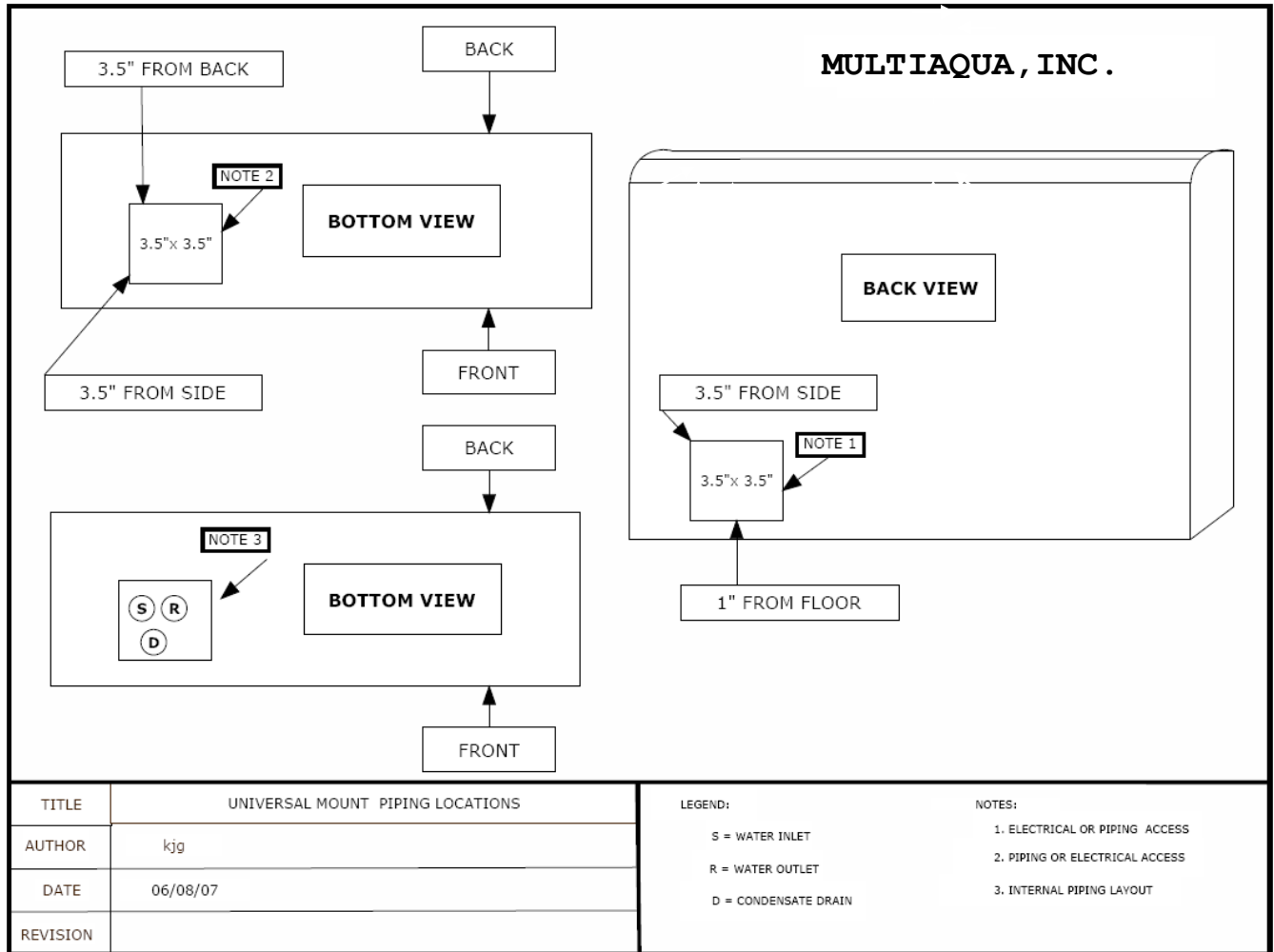
Figure 5



INSTALLATION & OPERATING MANUAL

CFFWA Universal Mount Fan Coils
12,000 – 60,000 BTUH

Piping Locations





INSTALLATION & OPERATING MANUAL

CFFWA Universal Mount Fan Coils
12,000 – 60,000 BTUH

----- CAUTION -----

Care must be taken when handling sheet metal. Sheet metal parts have sharp edges and could cause injury.

INSTRUCTIONS FOR INSTALLING THE MOUNTING BRACKETS AND UNIT

7. Carefully place fan coil into place and align mounting holes on both sides of the fan coil with the holes in the mounting brackets. Secure unit with mounting bolts.

Figure 6

8. Connections to the indoor unit are flared connections for both the water inlet and outlet to the fan coil.

Figure 7

9. Ensure tubing and fittings are in line with another before tightening nut to allow concentric seating of tube onto flare nut as to prevent leakage. Ensure the unit's flared connections are supported with a backup wrench when removing or tightening flair nuts.

10. Insulate both the inlet and outlet liquid solution lines to prevent condensation leakage.

11. Connect the field drain line to the clear drain tubing provided on the drain pan of the fan coil. Ensure the drain line has a 1/4" of fall per foot. Insulate the condensate drain line to prevent condensate sweating.

Figure 8

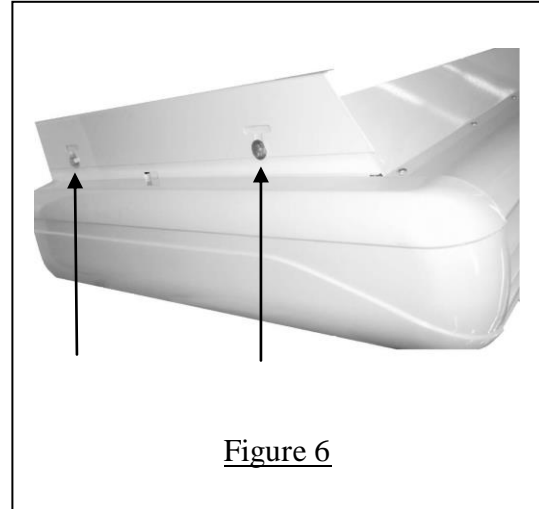


Figure 6

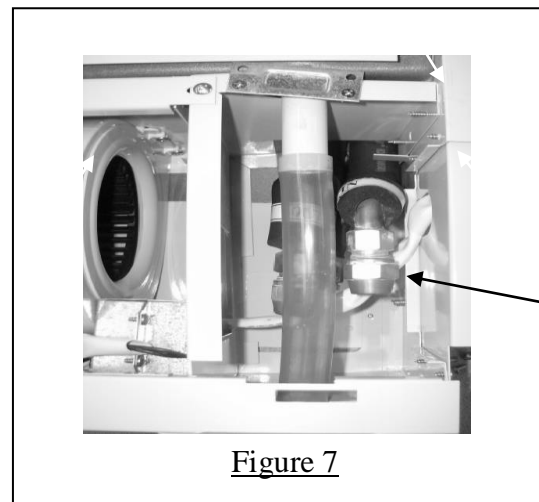


Figure 7

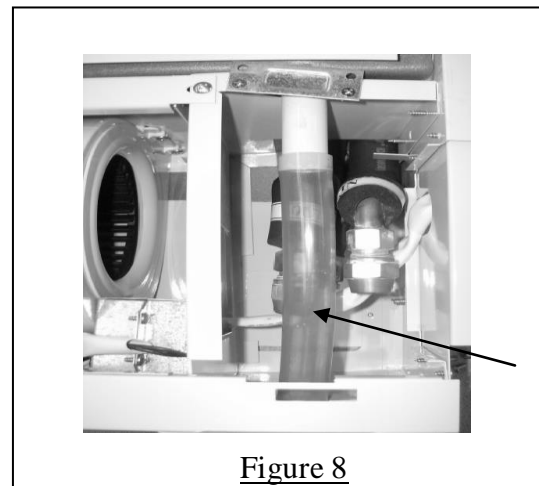


Figure 8