



FSFCA-06-1-U Direct Expansion Universal Mount Fan Coil

Direct Expansion Fan Coil 18,000 BTUH

*These specifications are subject to change without notice.
Check www.multiaqua.com for the latest information.*

Rev. 1.0

HVAC Guide Specifications

Direct Expansion Universal Mount Fan Coil

Nominal Size:

18,000 BTUH

MultiAqua Model Number:

FSFCA-06-1-U

Part 1-General

1.01 System Description

MultiAqua direct expansion fan coils are manufactured with galvanized steel and high impact molded polymers.

1.02 Quality Assurance

- A. Certified in accordance with U.L. Standard 95, latest version (U.S.A.)
- B. Manufactured in a facility registered to ISO 9002, Manufacturing Quality Standard.
- C. Fully load tested at the factory.
- D. Damage resistant packaging.

1.03 Delivery, Storage and Handling

- A. Packaged and readied for shipment from the factory.
- B. Controls shall be capable of withstanding 150°F storage temperatures in the control compartment.
- C. Stored and handled per manufacturer's recommendations.

Part 2-Product

2.01 Equipment

- A. General:
 1. Unit shall be a factory assembled and tested direct expansion fan coil.
 2. Shall be assembled with high quality.
 3. Contained with the unit shall be all factory wiring, piping, associated controls and special accessories required prior to start up.
- B. Unit Cabinet:
 1. Composed of galvanized steel with baked polyester powder and high impact polymers.
 2. Shall be internally insulated to ensure quiet operation.
- C. Fan Motors:
 1. Shall be available in 208/230-1-50/60 VAC.
 2. Fan motors shall be three speed, direct drive, and PSC type.
 3. Totally enclosed.
 4. Internal overload protected.
 5. Unit shall contain a swing motor to modulate the discharge air.
- D. Blower Wheels:
 1. Blower wheels are tangential and dynamically balanced.
- E. DX Coil:
 1. Coils manufactured with 3/8" rifled copper tubing mechanically bonded to aluminum fins.
 2. Coils shall be pressure tested to U.L. Standard 95.
- F. Drain Pan:
 1. All drain pans shall be coated on both the interior and exterior with baked polyester powder to resist corrosion.
 2. The exterior of all drain pans shall be insulated with closed cell to prevent condensation.
 3. Pans shall contain drain tubing that is accessible from the back, bottom and side of the unit.
- G. Filters:
 1. Unit shall contain 65% washable filters.

Part 3-Controls and Safeties

3.01 Controls

- A. Fan coils shall be completely factory wired and tested.
- B. Unit shall include a terminal block that is capable of incorporating a 24 VAC thermostat.
- C. Controls shall be capable of incorporating an optional hard-wired thermostat.

3.02 Safeties:

- A. Fan coil shall contain a non-reusable fuse on the secondary voltage side of the transformer.

Part 4-Operating Characteristics:**4.01 Electrical Requirements**

- A. Electrical shall include a terminal block.
- B. Electrical power supply shall be rated to withstand 120°F operating ambient temperatures.

Part 5- Definitions:**5.01 Abbreviations**

- A. CFM = Cubic Feet per Minute
- B. DB = Dry Bulb Temperature
- C. EWT = Entering Water Temperature
- D. GPM = US Gallons Per Minute
- E. MBH = BTU X 1000
- F. SC = Sensible Cooling
- G. TC = Total Cooling = Sensible + Latent
- H. WB = Wet Bulb Temperature
- I. WPD = Water Pressure Drop in feet of head
- J. dB = Decibel Level
- K. m = Meter
- L. In = Inches
- M. FPI = Fins per Inch
- N. OD = Outside Diameter
- O. ID = Inside Diameter
- P. MCA = Minimum Circuit Amps
- Q. MOP = Maximum Over current Protection
- R. LBS = Pounds U.S.

5.02 Measurements

- A. All measurements with regard to length, width, and height shall be in inches.

FSFCA-06-1-U Product Specifications & Capacity

Physical Data									
Model Number	Height (in)	Length (in)	Depth (in)	Weight (lbs)	Cooling Rows FPI	Copper Diameter (in)	Liquid Line (in)	Suction Line (in)	Drain (in)
FSFCA-06-1-U	25.72	38.32	9.20	90.20	3-13	3/8	3/8	5/8	1/2

Electrical Data						
Model Number	High Speed CFM	Volts/Phase/Hertz	Fan Motor HP	Fan Motor Full Load Ampacity	Fuse or HACR Circuit Breaker Per Circuit	
					MCA	MOP
FSFCA-06-1-U	500	208/230-1-50/60	1/15	0.54	.68	2

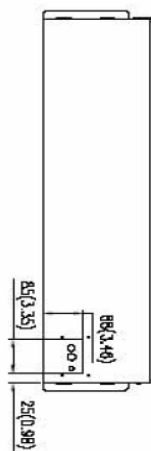
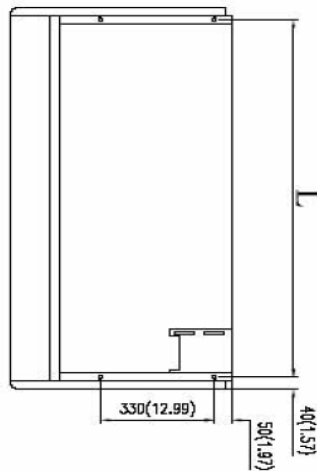
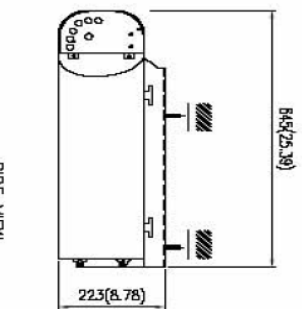
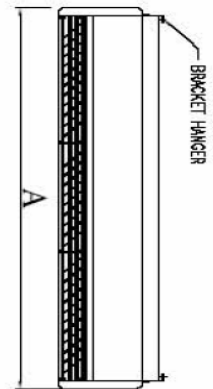
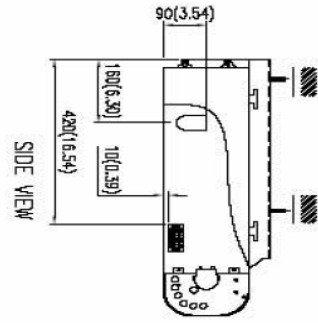
Performance Data		
Model Number	CFM	Nominal Cooling Capacity Btu/h
FSFCA-06-1-U	500	18,000

FSFCA-06-1-U Sound Data

MODEL #	FSFCA-06-1-U
Fan Speed	dB @ 1 m
H	44

FSFCA-06-01-U Dimensional Drawing

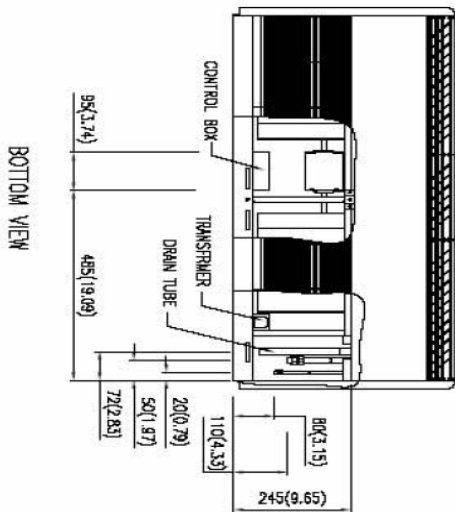
FSFCA Certified Drawing
 Drawing # 0907400077



TOP VIEW

BACK VIEW

Model FSFCA			
MODEL	A	L	
04	958(37.72)	878(34.57)	
06	958(37.72)	878(34.57)	
08	958(37.72)	878(34.57)	
10	1258(49.53)	1178(46.38)	
12	1258(49.53)	1178(46.38)	
16	1858(73.15)	1178(46.38)	
20	1858(73.15)	1178(46.38)	



BOTTOM VIEW

